



Membership Elects Four New Board Members

During a special membership meeting on Friday, June 17, at Wayne County Fairgrounds, four Wayne-White Counties Electric Cooperative members were elected to fill the four vacant seats on the Board of Directors, created through recent resignations. The four new board members are Noel Edmison representing District #9, Larry Hosselton representing District #1, Jack Kelsey representing District #4, and Marion McDowell representing District #7. The four were nominated from the floor at the special meeting, and were unopposed, as no other members were nominated to fill the vacant seats from the 205 registered voting members that were in attendance. As a result, paper ballots were not needed and the meeting was concluded in just 33 minutes.

The four new board members join five other current board members Steve Becker, Dale Harris, Jerry

Williams, Danny Rose, and Andy Glover. “The members have selected an experienced and respected group of directors to conduct cooperative business through the coming years,” said Lisa McMeen, Interim CEO. “We look forward to working with the newly selected directors.” At the regular monthly meeting on June 23, the following officers were seated: The board has selected Andy Glover of Mt. Erie to serve as the new Chairman, while Marion McDowell of McLeansboro has been chosen to serve as the new Treasurer. Danny Rose will continue to serve as Secretary of the board, while Steve Becker will continue in his role as Vice-Chairman. The board has hired the accounting firm of BKD from Evansville, Indiana to conduct a forensic audit of the cooperative finances. The board has also formed a search committee to begin the process of searching for a new CEO at the cooperative.



New board members seated from left are Edmison, Hosselton, Kelsey, and McDowell. Existing board members standing from left are Becker, Harris, Williams, Rose, and Glover.

In this issue...

- Large Reactor Components Pass Through Our Area.....** 16b
- New Edwards County Ambulance Service.....** 16c

Large Reactor Components Pass Through Our Area

“Law enforcement did a great job of controlling the public and keeping everyone safe.”

What has 24 axles, 256 tires, weighs more than 675,000 pounds, reaches a height of 20-feet-4-inches and a width of 20-feet-6-inches and moves at an average speed of 15 mph? No, it's not something from a science fiction movie. It's a specially designed trailer hauling major components of a reactor through portions of the Wayne-White Counties Electric Cooperative service area in southern Illinois.

The reactor, which originated in Italy, was loaded onto the trailer at BWX in Mount Vernon, Indiana for transport along roadways to a final destination at the Marathon/Ashland plant in Robin-

son. It will be used to make low-sulfur diesel fuel. Planning for the transportation project was a “logistical nightmare.”

Mammoet USA, Inc. in Rosharon, Texas had the contract duties to transport the reactor by road to Robinson. Brandon Bryan, Permits Coordinator said it was the only way to get from point A to point B. “Mammoet looked into shipping this piece by barge but there is no feasible waterway to the destination,” said Bryan. “The piece is also too large to be transported by rail.”

It took about eight hours to prepare the load to cross the I-64 Wabash River bridge at Grayville, as large 2-inch steel plates were placed strategically along the bridge for additional support. It took more than an hour for the 187-foot long rig to actually cross the bridge

As the rig moved north along Highway 130 through Grayville and Albion towards Olney, the payload required tremendous coordination with work crews and bucket trucks from Wayne-White Counties Electric Cooperative, Ameren IP, Verizon Telephone, Charter Cable, and city utilities due to the 20-foot 4-inch height. Many lines had to be raised or removed to allow passage of the huge unit. Wayne-White dispatched three trucks with five linemen who leap-frogged from line to line along the path to provide a clear and safe route. “The rig spent about five hours in our service territory on Monday before we handed off responsibility to Norris Electric Cooperative in their service area,” said Jerry White, Director of Operations at Wayne-White. “Law enforcement did a great job of controlling the public and keeping everyone safe.”

Linemen from Wayne-White Electric who provided assistance with power lines along the route included Kerry Merrit, Mike Richardson, Jason McKinney, Gerry Kinney, and Dave Cunningham. Engineers Erin Halley and Chris Hopfinger did most of the logistical pre-planning on behalf of the cooperative.



New Edwards County Ambulance Service Is Up and Running

Residents of Edwards County have been without a full-time ambulance service for about a year and a half. That problem has recently been solved thanks to \$180,000 in seed money provided by officials at Wayne-White Counties Electric Cooperative in Fairfield. The money has been loaned to the Edwards County Emergency Medical Service at a special low rate of 3 percent. The money is actually provided through the Illinois Rural Development Revolving Loan Fund.

“Work to secure a new ambulance service for Edwards County began in August 2004,” said Tom Hortin, County Commissioner and EMT Director. “We got it on the November ballot, and the public voted nearly 2-1 in support of the tax subsidy to aid the effort.” Despite the election results, the county still needed lots of funding to get the ambulance project off the ground. “That’s where Wayne-White Electric stepped in and offered to help,” said Skip Hamilton, President of the EMT Board of Directors. “We are extremely grateful for their assistance in obtaining this funding.”

The county was able to utilize the funds to purchase two identical 2001 pre-owned ambulance vehicles from Heartland in Mt. Vernon. Both of the E-450 units were used previously in North Carolina, and have just 70,000 miles on them. They look brand new. Unit 1 is assigned to Albion, while Unit 2 is assigned to West Salem. There are currently 12 licensed and trained EMTs to provide the medical manpower for the ambulance units. Michelle Kocher is the Administrator for the ambulance service. The county hopes to license and train another 24 EMTs in the future and eventually add two more ambulance units for the Grayville area.

The ambulance service can transport individuals to nearby hospitals in Olney, Fairfield, or Mt. Carmel, depending on the location of the emer-

gency call, and the nature of the injuries or illness. There is still a need to purchase equipment for each ambulance unit, as well as ongoing supplies. Anyone who wishes to make a monetary donation may contact the Edwards County Emergency Medical Service at 445-3201.



Jerald Houser, VP of Member Services, presented the check to the Edwards County Emergency Medical Service. Pictured with Houser in front of one of the ambulance units are L-R: Gene Seals, EMT Director; Michelle Kocher, Ambulance Service Administrator; Skip Hamilton, President EMT Board of Directors; Houser; Gene Copeland, EMT Director; and Tom Hortin, EMT Director.

Maintenance Issues Solved In Orchardville and Albion Areas

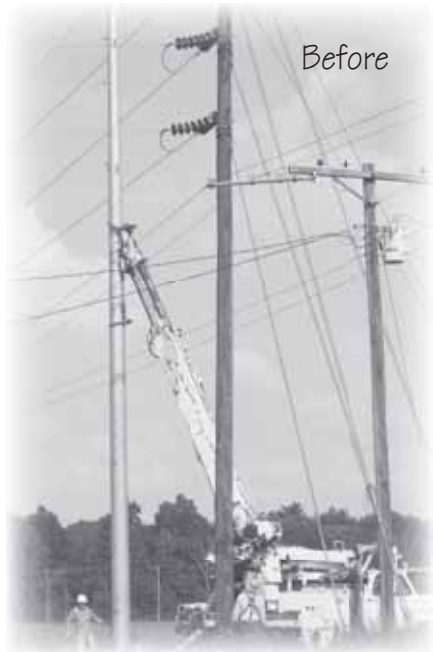


Before

A recently planned outage announced in the Orchardville area has resulted in improved service and less maintenance needs in that portion of our service area as depicted by these before and after photos. The badly bowed-back pole (at left) was creating a lot of stress on the lines. It was replaced by a “recycled” wooden pole (bottom left) that was salvaged from the lengthy steel pole installation that was done from Wayne City to McLeansboro. The cooperative saved significant money by utilizing the “recycled” wooden pole while solving a maintenance issue.



After



Before



After

At the Albion Substation, a new steel pole and 69KV switch was recently installed. The existing wooden pole (above left) tested bad, and there were also ongoing maintenance concerns that were solved with the installation of the new switch system. The completed project is pictured (above right).

Welcome New Members

- Charles D. Allison, Rinard
- Arrington Township, Fairfield
- Christopher & Jerri Ballard, Fairfield
- Hytham & Rima Beck, Fairfield
- Cornerstone Gas Mart, Geff
- Christopher & Stephanie Budde, Enfield
- Tom & Marilyn Cahill, Centralia
- Carter Farms Inc., Mill Shoals
- Destiny Dowden, Crossville
- Michael Dye, Fairfield
- Joseph Easley, Bluford
- Robert Faulkner, Crossville
- Sam Greathouse, West Salem

- Justin Hall, McLeansboro
- Jerry & Mary Harris, Cherokee Village, AR
- Larry & Judy Henshaw, Norris City
- David Hutchcraft, Clay City
- John Hyatt Jr., Springerton
- Joseph & Amanda Hylton, McLeansboro
- Robert & Karen Jackson, Bluford
- Denise Jensen, Wayne City
- James & Margaret Kukuk, Omaha
- David & Tonya Link, Fairfield
- Melissa Matthews, Wayne City
- Aaron Morse, Mt. Eric

- William Mourey, Bluford
- Edward & Michele Newman, Carmi
- Cheryl Patton, Fairfield
- Lora Pepplewel, Wayne City
- Josephine Rahn, Mill Shoals
- Justin Rivard, Sims
- Jesse Rodgers, Norris City
- Shelby Ross Sanders, Sims
- Alicia Shelton, Springerton
- Timothy R. Smith, Fairfield
- Donna Sweeney, Wayne City
- Dustin & Renee Wiggins, Wayne City